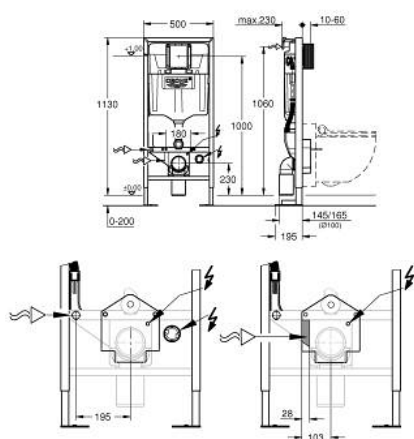


39 128 001 RAPID SL ELEMENT FOR GROHE SENSIA SHOWER WCS, 1.13 M INSTALLATION HEIGHT

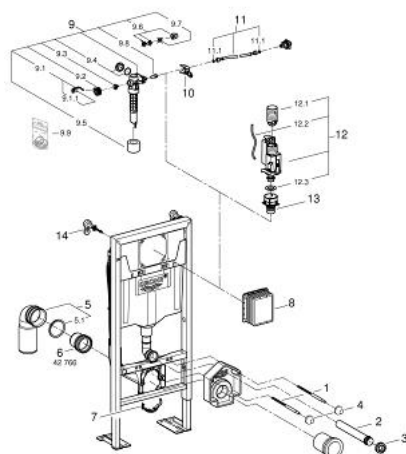


PRODUCT DESCRIPTION

- With flushing cistern GD 2, 6 - 9 l
- Flushing cistern GD 2, 6 - 9 l, containing following features:
- Including wall brackets 38 558 00M for on-the-wall installation
- Concealed socket for mains supply
- For mounting of small flush plates please order revision shaft 40 911 000 (sold separately)



39 128 001 RAPID SL ELEMENT FOR GROHE SENSIA SHOWER WCS, 1.13 M INSTALLATION HEIGHT



SPARE PARTS, September 2015 – now

- 1: Threaded screw (Spare part-nr. 4276400M)
- 2: Wall union (Spare part-nr. 43352000)
- 3: Connector (Spare part-nr. 37119000)
- 4: Bath faucet fastener (Spare part-nr. 43511000)
- 5: Elbow (Spare part-nr. 42216000)
- 5.1: O-ring (Spare part-nr. 4207700M)
- 6: Distance pipe 3" (Spare part-nr. 42766000)
- 7: Support for outlet (Spare part-nr. 42243000)
- 8: Inspection shaft (Spare part-nr. 66791000)
- 9: Filling valve (Spare part-nr. 37095000)
- 9.1: Lever (Spare part-nr. 43734000)
- 9.1.1: Seal (Spare part-nr. 4377000M)
- 9.2: Valve head (Spare part-nr. 43536000)
- 9.3: Membrane (Spare part-nr. 4375800M)
- 9.4: Screw cap (Spare part-nr. 43735000)
- 9.5: Valve float (5 pcs) (Spare part-nr. 4379100M)
- 9.6: Set of seals (Spare part-nr. 43722000)*
- 10: Support unit (Spare part-nr. 42246000)
- 11: Connection tube (Spare part-nr. 42233000)
- 11.1: O-ring (Spare part-nr. 0319100M)
- 12: Dual Flush discharge valve AV1 (Spare part-nr. 42320000)
- 12.1: extension for Overflow pipe (Spare part-nr. 42313000)
- 12.2: pneumatic hose (Spare part-nr. 42319000)
- 12.3: Seal (Spare part-nr. 42310000)
- 13: Valve seat for GD2 (Spare part-nr. 42315000)
- 14: Wall brackets (Spare part-nr. 3855800M)

* Optional accessories