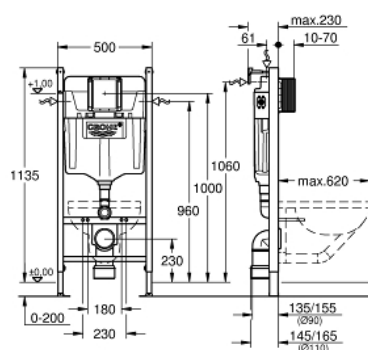


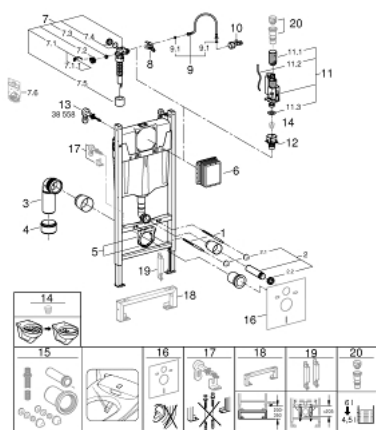
38 971 000 **SOLIDO 2-IN-1 SET FOR WC, 1.13 M INSTALLATION HEIGHT**

PRODUCT DESCRIPTION

- flushing cistern GD 2, 6 - 9 l
- Consisting of:
 - Solido Compact element for WC (38 939 000)
 - 2 x wall bracket with mounting kits



38 971 000 **SOLIDO 2-IN-1 SET FOR WC, 1.13 M INSTALLATION HEIGHT**



SPARE PARTS, November 2024 – now

- 1: Threaded screw (Spare part-nr. 4276400M)
- 2: WC inlet and outlet connecting set (Spare part-nr. 37311K00)
- 2.1: Bath faucet fastener (Spare part-nr. 43511SH0)
- 2.2: Connector (Spare part-nr. 37119000)
- 3: PP-outlet elbow (DN 90) (Spare part-nr. 42327000)
- 4: 4" Outlet Adaptor F Rapid SL (Spare part-nr. 42242000)
- 5: Support for outlet (Spare part-nr. 42243000)
- 6: Inspection shaft (Spare part-nr. 66791000)
- 7: Filling valve (Spare part-nr. 42583000)
- 7.1: Lever (Spare part-nr. 43734000)
- 7.1.1: Seal (Spare part-nr. 4377000M)
- 7.2: Valve head (Spare part-nr. 43536000)
- 7.3: Membrane (Spare part-nr. 4375800M)
- 7.4: Screw cap (Spare part-nr. 43735000)
- 7.5: Valve float (5 pcs) (Spare part-nr. 4379100M)
- 7.6: Set of seals (Spare part-nr. 43722000)*
- 8: Support unit (Spare part-nr. 42246000)
- 9: Connection tube (Spare part-nr. 42233000)
- 9.1: O-ring (Spare part-nr. 0319100M)
- 10: Water connection (Spare part-nr. 48561000)
- 11: Dual Flush discharge valve AV1 (Spare part-nr. 42320000)
- 11.1: extension for Overflow pipe (Spare part-nr. 42313000)
- 11.2: pneumatic hose (Spare part-nr. 42319000)
- 11.3: Seal (Spare part-nr. 42310000)
- 12: Valve seat (Spare part-nr. 42599000)
- 13: Wall brackets (Spare part-nr. 3855800M)
- 14: Flow restrictor (Spare part-nr. 42300000)*
- 15: Retrofit kit for shower toilets Sensia Arena and IGS (Spare part-nr. 4089900)*
- 16: Set for noise protection (Spare part-nr. 37131000)*
- 17: Xtra wall brackets, flexible placing (Spare part-nr. 38733000)*
- 18: Extension for Volume Control (Spare part-nr. 38629000)*
- 19: Accessories (Spare part-nr. 38779000)*
- 20: 4.5 l adapter for GD2 (Spare part-nr. 42333000)*

* Optional accessories