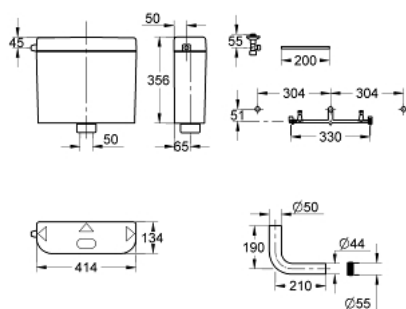


## 37 406 SH0 **START FLUSHING CISTERN FOR WC**



### PRODUCT DESCRIPTION

- Colour: Alpine white
- 6 - 9 l adjustable
- exposed installation
- interruptible flush cycle
- hidden flush pipe connection
- servo actuation
- low level
- made of PS
- Low noise (group I acc. to German Noise Specification)
- fully insulated against condensation
- Angle valve ½"
- copper pipe
- mounting template
- flush pipe bend
- WC inlet connector



## 37 406 SH0 **START FLUSHING CISTERN FOR WC**



### **SPARE PARTS**, July 2011 – now

- 1: Filling valve (Spare part-nr. 37095000)
- 1.1: Lever (Spare part-nr. 43734000)
- 1.1.1: Seal (Spare part-nr. 4377000M)
- 1.2: Valve head (Spare part-nr. 43536000)
- 1.3: Membrane (Spare part-nr. 4375800M)
- 1.4: Screw cap (Spare part-nr. 43735000)
- 1.5: Valve float (5 pcs) (Spare part-nr. 4379100M)
- 1.6: Set of seals (Spare part-nr. 43722000)\*
- 2: Servo discharge valve (Spare part-nr. 43486000)
- 2.1: Outlet piston (Spare part-nr. 43544000)
- 2.1.1: Seal (Spare part-nr. 43808000)
- 3: Threaded connection (Spare part-nr. 43259SH0)
- 4: Connector (Spare part-nr. 37119000)
- 5: EGAPLUS 1/2" service stop (Spare part-nr. 41263000)
- 6: Mounting Template (Spare part-nr. 43514000)
- \* Optional accessories