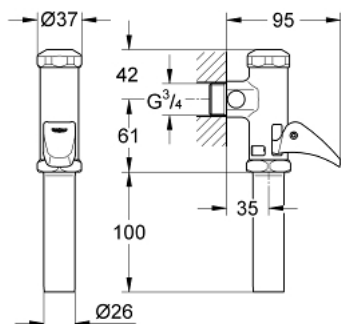


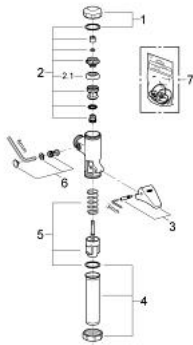
37 402 000 **START DAL-AUTOMATIC FLUSH VALVE FOR WC**

PRODUCT DESCRIPTION

- Colour: chrome
- exposed installation
- $\frac{3}{4}$ "
- flow pressure range from 1.2 - 5.0 bar
- for wash-down and wash-out bowls
- with flow rate adjustment
- material: brass
- GROHE Long-Life finish



37 402 000 **START DAL-AUTOMATIC FLUSH VALVE FOR WC**



SPARE PARTS, May 2011 – now

- 1: Cover (Spare part-nr. 43103000)
- 2: Piston (Spare part-nr. 43448000)
- 2.1: Sleeve (Spare part-nr. 4376500M)
- 3: Lever (Spare part-nr. 43056000)
- 4: Discharge Sleeve (Spare part-nr. 43316000)
- 5: Sleeve (Spare part-nr. 42923000)
- 6: Throttle (Spare part-nr. 43388000)
- 7: Set of seals (Spare part-nr. 43706000)*

* Optional accessories