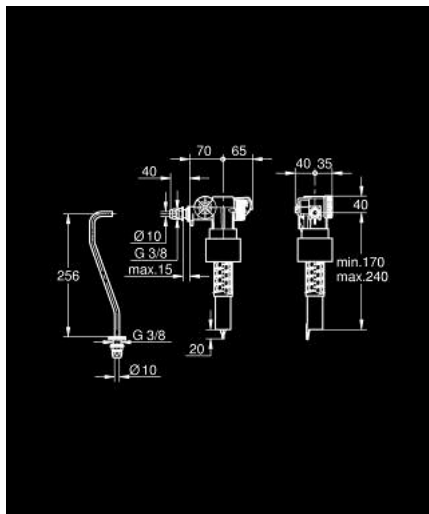


## 37 093 000 FILLING VALVE

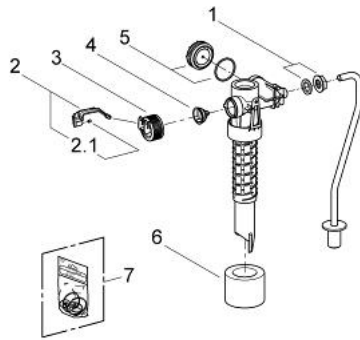


### PRODUCT DESCRIPTION

- Colour: chrome
- $\frac{1}{2}$ "
- For high and low level cisterns made of ceramic, plastic or cast iron
- Without adapter for the pipe connection
- Throttle cap
- \*\*Max. possible shortening of 4"



## 37 093 000 **FILLING VALVE**



### **SPARE PARTS**, December 2003 – now

- 1: Inlet adaptor (Spare part-nr. 43262000)
- 2: Lever (Spare part-nr. 43734000)
- 2.1: Seal (Spare part-nr. 4377000M)
- 3: Valve head (Spare part-nr. 43536000)
- 4: Membrane (Spare part-nr. 4375800M)
- 5: Screw cap (Spare part-nr. 43735000)
- 6: Valve float (5 pcs) (Spare part-nr. 4379100M)
- 7: Set of seals (Spare part-nr. 43722000)\*

\* Optional accessories