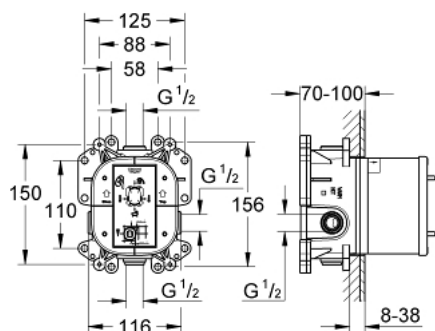


35 501 000 GROHE RAPIDO E UNIVERSAL SINGLE-LEVER MIXER FOR CONCEALED INSTALLATION

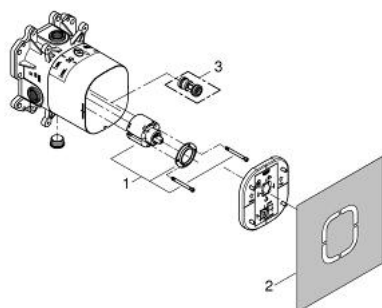


PRODUCT DESCRIPTION

- for use with bath and shower valve
- Without finishing trim set
- Flat installation depth 70 - 100 mm
- Easy to install, premounted and tested unit
- GROHE SilkMove 46 mm ceramic cartridge
- Adjustable flow rate limiter
- Safe to install, stable built-in-box and protective cap
- Mounting options for solid walls and dry walls
- Material for wall sealing included
- All connectors 1/2", with identification marking
- diverter for bath valve trim set
- body of DR brass
- Noise classification 1 in accordance with DIN4109 incl. certificate
- min. recommended pressure 1.0 bar



35 501 000 GROHE RAPIDO E UNIVERSAL SINGLE-LEVER MIXER FOR CONCEALED INSTALLATION



SPARE PARTS, April 2006 – now

1: Cartridge (Spare part-nr. 46048000)

2: Seal kit (Spare part-nr. 48263000)

3: Safety Combination (EN 1717) (Spare part-nr. 29008000)*

* Optional accessories