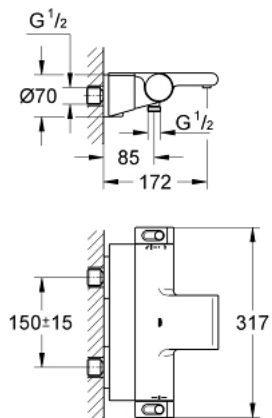


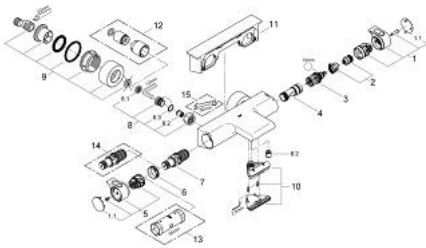
34 464 001 GROHTHERM 2000 THERMOSTATIC BATH MIXER 1/2"



PRODUCT DESCRIPTION

- Colour: chrome
- Wall mounted
- 100% GROHE CoolTouch consisting of safety housing + S-unions with CoolTouch escutcheons
- GROHE LongLife finish
- GROHE Aqua Paddles, ergonomically shaped handles
- GROHE SafeStop - safety button at 38°C
- GROHE SafeStop Plus - optional temperature limiter at 43°C included
- GROHE TurboStat - compact cartridge with wax thermoelement
- Integrated mixed water shut off
- GROHE AquaDimmer with multiple function:
 - FlowControl Button - One-button switch to full water flow
 - Flow control
 - Diverter: bath/shower
 - Shower bottom outlet 1/2"
 - spray pattern: GROHE XL Waterfall
 - Flow straightener
 - Built-in non-return valves
 - Dirt strainers
 - Protected against backflow
- covered S-unions, CoolTouch escutcheons with wall sealing
- GROHE EasyReach shower tray
- removable for easy cleaning

34 464 001 GROHTHERM 2000 THERMOSTATIC BATH MIXER 1/2"



SPARE PARTS, February 2012 – now

- 1: Shut-off handle (Spare part-nr. 47923000)
- 1.1: Cover cap (Spare part-nr. 4788300M)
- 2: Stop (Spare part-nr. 47925000)
- 3: Aquadimmer (Spare part-nr. 12433000)
- 4: Water flow (Spare part-nr. 47751000)
- 5: Temperature control handle (Spare part-nr. 47917000)
- 5.1: Cover cap (Spare part-nr. 4788300M)
- 6: Fitting ring (Spare part-nr. 47743000)
- 7: 1/2" Thermostatic compact cartridge (Spare part-nr. 47439000)
- 8: Non-return valve (Spare part-nr. 47189000)
- 8.1: Dirt Strainer (Spare part-nr. 0726400M)
- 8.2: Non-return valve (Spare part-nr. 08565000)
- 8.3: O-ring (17 x 2mm) (Spare part-nr. 0305500M)
- 9: S-union (Spare part-nr. 12693000)
- 10: Water flow (Spare part-nr. 47924000)
- 11: GROHE EasyReach shower tray (Spare part-nr. 18608001)
- 12: Extension set (1 3/16") (Spare part-nr. 46238000)*
- 13: Socket Spanner (Spare part-nr. 19332000)*
- 14: 1/2" Thermostatic compact cartridge (Spare part-nr. 47175000)*
- 15: Special spanner wrench (Spare part-nr. 19377000)*

* Optional accessories