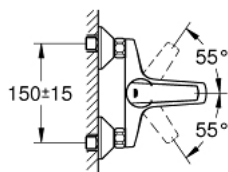
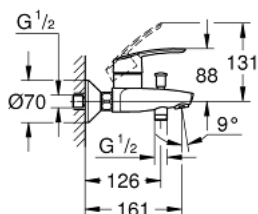


32 278 001 **START SINGLE-LEVER BATH MIXER 1/2"**

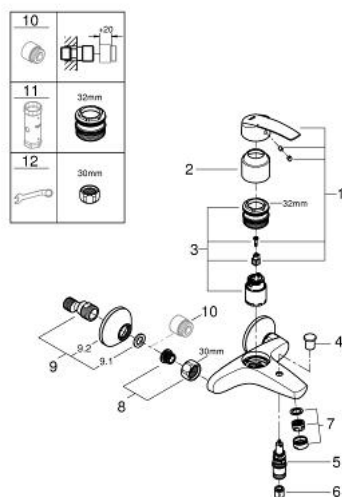


PRODUCT DESCRIPTION

- Colour: chrome
- Wall mounted
- Metal lever
- GROHE SilkMove 35 mm ceramic cartridge
- With temperature limiter
- Adjustable flow rate limiter
- GROHE Long-Life finish
- Automatic diverter: bath/shower
- Shower outlet 1/2" with integrated non-return valve
- mousseur
- S-unions
- metal wall escutcheons
- Protected against backflow



32 278 001 **START SINGLE-LEVER BATH MIXER 1/2"**



SPARE PARTS, November 2014 – now

- 1: Lever (Spare part-nr. 46898000)
- 2: Cap (Spare part-nr. 46899000)
- 3: Cartridge (Spare part-nr. 46374000)
- 4: Diverter knob (Spare part-nr. 65648000)
- 5: 3-Way Diverter Valve & Trim (Spare part-nr. 65655000)
- 6: Non-return valve (Spare part-nr. 08565000)
- 7: Flow control (Spare part-nr. 13952000)
- 8: 1/2" screw connection (Spare part-nr. 45044000)
- 9: S-union (Spare part-nr. 12075000)
- 9.1: Seal (Spare part-nr. 0138600M)
- 9.2: Escutcheon (Spare part-nr. 0221000M)
- 10: Extension 3/4" (Spare part-nr. 0713000M)*
- 11: Socket Spanner (Spare part-nr. 19332000)*
- 12: Special spanner wrench (Spare part-nr. 19377000)*

* Optional accessories