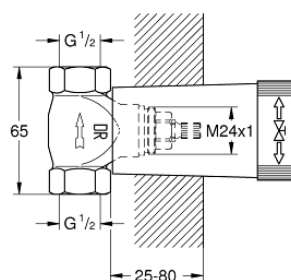


29 800 000 **CONCEALED STOP-VALVE, 1/2"**

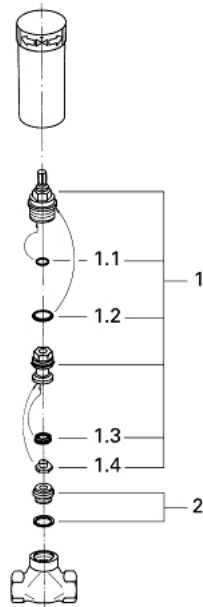


PRODUCT DESCRIPTION

- pre-assembled headpart 1/2"
- short spindle
- protection sleeve
- threaded union 1/2"
- DR-brass



29 800 000 **CONCEALED STOP-VALVE, 1/2"**



SPARE PARTS, January 1986 – now

1: 1/2" cartridge with lever handle (Spare part-nr. 07146000)

1.1: O-ring (6 x 2mm) (Spare part-nr. 0128300M)

1.2: O-ring (18,2 x 1,7mm) (Spare part-nr. 0392400M)

1.3: Seal (Spare part-nr. 0529100M)

2: Replacement seat (Spare part-nr. 45023000)