

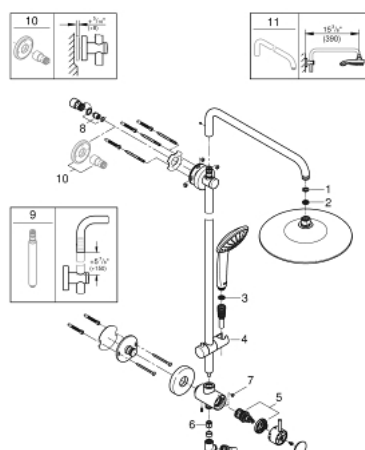
27 867 001 **RETROFIT SYSTEM 260 SHOWER SYSTEM WITH DIVERTER FOR WALL MOUNTING**



PRODUCT DESCRIPTION

- Colour: chrome
- Consisting of:
 - horizontal swivable 450 mm shower arm
- Built-in diverter with single or duo function and optional eco setting
- Allows change between:
 - head shower Euphoria 260 (26 457)
- 3 spray patterns:
 - Rain, SmartRain, Jet
- With ball joint
- Rotation angle $\pm 15^\circ$
- Hand shower Euphoria Mono (27 493)
- Spray pattern: Rain
- adjustable in height with gliding element
- Distance between diverter and upper bracket: 653 mm
- Rotaflex Metal Long-Life TwistStop shower hose 1.50 m
- Angle adapter to prevent hose interfering with shower valve
- GROHE Water Saving 9,5 l/min flow limiter
- GROHE DreamSpray perfect spray pattern
- GROHE Long-Life finish
- SpeedClean® anti-lime system
- Inner WaterGuide for a longer life
- TwistStop to prevent hose from twisting
- min. recommended pressure 1.0 bar
- System includes 2 back flow preventers
- Optional compensation disc (26 030) available for uneven wall installation
- Optional height extension (26 464) available for raising the shower head

27 867 001 RETROFIT SYSTEM 260 SHOWER SYSTEM WITH DIVERTER FOR WALL MOUNTING



SPARE PARTS, October 2016 – now

- 1: Fibre seal dia. Ø 18,5 x Ø 12 x 2 (Spare part-nr. 0138900M)
 - 2: Dirt strainer (Spare part-nr. 48007000)
 - 3: Dirt strainer (Spare part-nr. 0700200M)
 - 4: Glide element (Spare part-nr. 12140000)
 - 5: 3-Way Diverter Valve & Trim (Spare part-nr. 48058000)
 - 6: Non-return valve (Spare part-nr. 08565000)
 - 7: Flow limiter (Spare part-nr. 48160000)
 - 8: non-return valves (Spare part-nr. 48183000)
 - 9: 6" Height Extension (Spare part-nr. 26464000)*
 - 10: Spacer (Spare part-nr. 26030000)*
 - 11: Shower arm for shower systems (Spare part-nr. 14047000)*
- * Optional accessories