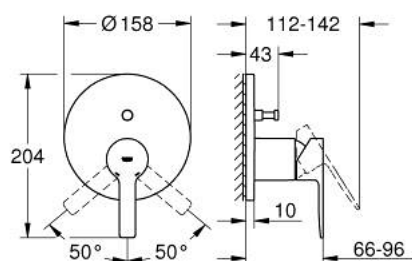


24 064 AL1 LINEARE SINGLE-LEVER MIXER WITH 2-WAY DIVERTER



PRODUCT DESCRIPTION

- Colour: Brushed hard graphite
- Set for final installation for
- GROHE Rapido SmartBox (35 600/35 604)
- GROHE SilkMove 46 mm ceramic cartridge
- GROHE Long-Life finish
- Wall escutcheon with GROHE FastFixation (covered escutcheon and shaft sealing, covered fixing)
- Escudo de metal, retroactivamente 6° ajustable
- Metal lever
- automatic 2-way diverter
- flow performance: outlet B = 27 l/min, outlet C = 27 l/min
- Requires Rough-In Set (29 038 001) (sold separately)



24 064 AL1 LINEARE SINGLE-LEVER MIXER WITH 2-WAY DIVERTER



SPARE PARTS, March 2019 – now

- 1: Lever (Spare part-nr. 46988AL0)
- 2: Escutcheon (Spare part-nr. 48429AL0)
- 3: Mounting plate (Spare part-nr. 48440000)
- 4: Cap (Spare part-nr. 09038AL0)
- 5: 3-Way Diverter Valve & Trim (Spare part-nr. 48442AL0)
- 6: Cartridge (Spare part-nr. 46048000)
- 7: Non-return valve (Spare part-nr. 49085000)
- 8: Seal (Spare part-nr. 48360000)
- 9: Temperature limiter (Spare part-nr. 46375000)*
- 10: Backflow protection combination (EN1717) (Spare part-nr. 14055000)*
- 11: Universal extension set single-lever mixers, 25 mm (Spare part-nr. 14056000)*
- 12: 3-Way Diverter Valve & Trim (Spare part-nr. 48444AL0)*
- 13: Universal extension set single-lever mixers, 50 mm (Spare part-nr. 14057000)*
- 14: 3-Way Diverter Valve & Trim (Spare part-nr. 48445AL0)*

* Optional accessories