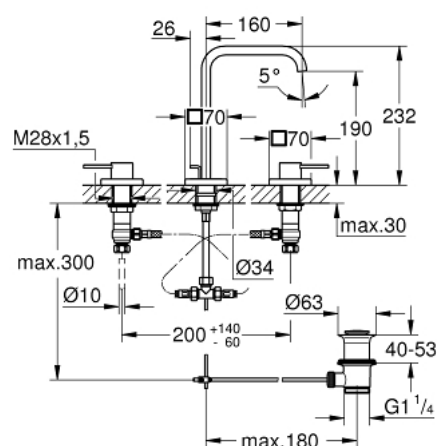
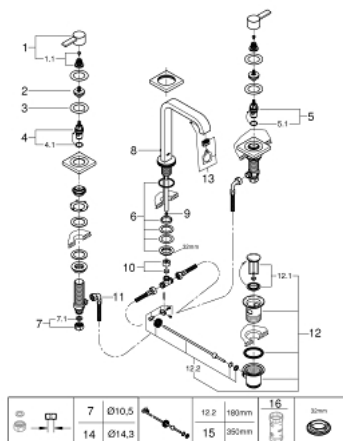




- Colour: chrome
- with lever handles
- metal escutcheons
- Ceramic headparts 1/2", 90°
- GROHE Long-Life finish
- flow limiter 8 l/min.
- Spout with mousseur
- Pressure-proof, flexible connection hoses between spout and side valves
- Pop-up waste set 1 1/4"



## 20 188 000 ALLURE THREE-HOLE BASIN MIXER 1/2" M-SIZE



### SPARE PARTS, August 2018 – now

- 1: Handle (Spare part-nr. 48043000)
  - 1.1: Repl. handle connection kit (Spare part-nr. 45186000)
  - 1.1.1: O-ring (18,2 x 1,7mm) (Spare part-nr. 0392400M)
  - 2: Extension for spindle (Spare part-nr. 48045000)
  - 3: Sealing washer (Spare part-nr. 48047000)
  - 4: Ceramic cartridge (Spare part-nr. 45882000)
  - 4.1: O-ring (18,2 x 1,7mm) (Spare part-nr. 0392400M)
  - 5: Ceramic cartridge (Spare part-nr. 45883000)
  - 5.1: O-ring (18,2 x 1,7mm) (Spare part-nr. 0392400M)
  - 6: Shank mounting kit (M28 x 1,5mm) (Spare part-nr. 45025000)
  - 7: Coupling nut (1/2") (Spare part-nr. 1290100M)
  - 7.1: Fibre seal dia. Ø 18,5 x Ø 12 x 2 (Spare part-nr. 0138900M)
  - 8: Pop-up rod (Spare part-nr. 65196000)
  - 9: Flow limiter (Spare part-nr. 46324000)
  - 10: Compression union (3/8") (Spare part-nr. 12914000)
  - 11: Flexible connection hose (Spare part-nr. 45704000)
  - 12: 1 1/4" waste set (Spare part-nr. 28910000)
  - 12.1: Plug (Spare part-nr. 07182000)
  - 12.2: Eccentric rod (Spare part-nr. 07052000)
  - 13: Flow control (Spare part-nr. 13220000)
  - 14: Coupling nut (1/2" x 14.5mm) (Spare part-nr. 1290200M)\*
  - 15: Eccentric rod (Spare part-nr. 07341000)\*
  - 16: Socket Spanner (Spare part-nr. 19332000)\*
- \* Optional accessories