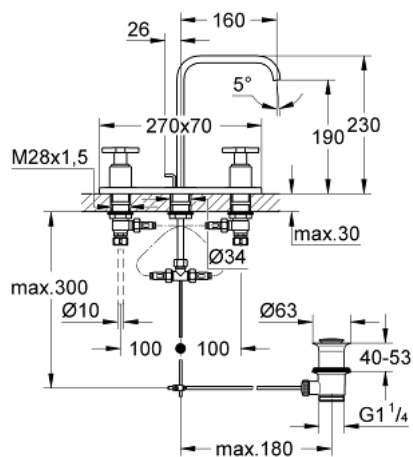


20 143 000 **ALLURE THREE-HOLE BASIN MIXER 1/2"**
M-SIZE

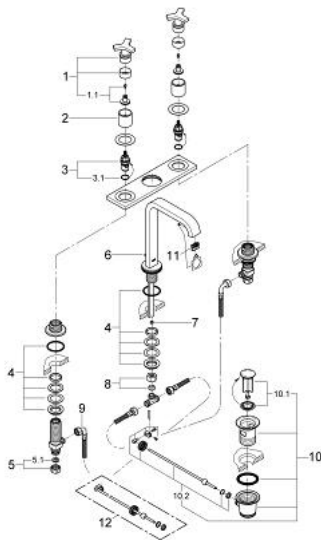


PRODUCT DESCRIPTION

- Colour: chrome
- with metal plate
- GROHE LongLife finish
- Carbodur ceramic headpart 1/2", 180°
- flow limiter 8 l/min.
- Spout with mousseur
- Pop-up waste set 1 1/4"
- Pressure-proof, flexible connection hoses between spout and side valves
- min. recommended pressure 1.0 bar



20 143 000 **ALLURE THREE-HOLE BASIN MIXER 1/2"**
M-SIZE



SPARE PARTS, August 2008 – now

- 1: Handle (Spare part-nr. 46611000)
- 1.1: Repl. handle connection kit (Spare part-nr. 45605000)
- 2: Sleeve (Spare part-nr. 08124000)
- 3: Ceramic cartridge (Spare part-nr. 45346000)
- 3.1: O-ring (18,2 x 1,7mm) (Spare part-nr. 0392400M)
- 4: Shank mounting kit (M28 x 1,5mm) (Spare part-nr. 45025000)
- 5: Coupling nut (1/2") (Spare part-nr. 1290100M)
- 5.1: Fibre seal dia. Ø 18,5 x Ø 12 x 2 (Spare part-nr. 0138900M)
- 6: Pop-up rod (Spare part-nr. 65196000)
- 7: Flow limiter (Spare part-nr. 46324000)
- 8: Compression union (3/8") (Spare part-nr. 12914000)
- 9: Flexible connection hose (Spare part-nr. 45704000)
- 10: 1 1/4" waste set (Spare part-nr. 28910000)
- 10.1: Plug (Spare part-nr. 07182000)
- 10.2: Eccentric rod (Spare part-nr. 07052000)
- 11: Flow control (Spare part-nr. 13220000)
- 12: Eccentric rod (Spare part-nr. 07341000)*

* Optional accessories